

Current Procedural Terminology (CPT®) codes, descriptions, and other data are copyright 1966, 1970, 1973, 1977, 1981, 1983-2024 by the American Medical Association. All rights reserved.

CPT® is a registered trademark of the American Medical Association.

U.S. GOVERNMENT RIGHTS. CPT is commercial technical data developed exclusively at the private expense by the American Medical Association, 330 N. Wabash Ave., Suite 39300, Chicago, IL 60611-5885. Use does not grant the Federal Government a direct license to use CPT based on FAR 52.227-14 (Data Rights – General) and DFARS 252.227-7015 (Technical Data Commercial Items).

This file may not be sold, duplicated, or given away in whole or in part without the express written consent of the American Medical Association.

To license additional CPT® products or to request a license for the distribution of products with CPT® content, visit our website at <https://www.ama-assn.org/practice-management/cpt/ama-cpt-licensing-overview>, or purchase other CPT® products, contact customer service at 800-621-8335.

For the most current CPT® coding information, to learn about the early release of CPT® codes, and to review the CPT® Errata to bring yourself up to date on corrections, please visit <https://www.ama-assn.org/practice-management/errata-technical-corrections>.

The *CPT® Clinician Descriptors* may not be sold, duplicated, or given away in whole or in part without the expressed written consent of the American Medical Association.

The *CPT® Consumer Friendly Descriptors* may not be sold, duplicated, or given away in whole or in part without the expressed written consent of the American Medical Association.

Evaluation and Management (E/M) Services Guidelines

In addition to the information presented in the Introduction, several other items unique to this section are defined or identified here.

E/M Guidelines Overview

The E/M guidelines have sections that are common to all E/M categories and sections that are category specific. Most of the categories and many of the subcategories of service have special guidelines or instructions unique to that category or subcategory. Where these are indicated, eg, “Hospital Inpatient and Observation Care,” special instructions are presented before the listing of the specific E/M services codes. It is important to review the instructions for each category or subcategory. These guidelines are to be used by the reporting physician or other qualified health care professional to select the appropriate level of service. These guidelines do not establish documentation requirements or standards of care. The main purpose of documentation is to support care of the patient by current and future health care team(s). These guidelines are for services that require a face-to-face encounter with the patient and/or family/caregiver. (For 99211 and 99281, the face-to-face services may be performed by clinical staff.)

► In the **Evaluation and Management** section (98000-98016, 99202-99499), there are many code categories. Each category may have specific guidelines, or the codes may include specific details. These E/M guidelines are written for the following categories:

- Office or Other Outpatient Services
- Telemedicine Services
- Hospital Inpatient and Observation Care Services
- Consultations
- Emergency Department Services
- Nursing Facility Services
- Home or Residence Services
- Prolonged Service With or Without Direct Patient Contact on the Date of an Evaluation and Management Service ◀

Classification of Evaluation and Management (E/M) Services

The E/M section is divided into broad categories, such as office visits, hospital inpatient or observation care visits, and consultations. Most of the categories are further divided into two or more subcategories of E/M services. For example, there are two subcategories of office visits (new patient and established patient) and there are two subcategories of hospital inpatient and observation care visits (initial and subsequent). The subcategories of E/M services are further classified into levels of E/M services that are identified by specific codes.

The basic format of codes with levels of E/M services based on medical decision making (MDM) or time is the same. First, a unique code number is listed. Second, the place and/or type of service is specified (eg, office or other outpatient visit). Third, the content of the service is defined. Fourth, time is specified. (A detailed discussion of time is provided in the Guidelines for Selecting Level of Service Based on Time.)

The place of service and service type are defined by the location where the face-to-face encounter with the patient and/or family/caregiver occurs. For example, service provided to a nursing facility resident brought to the office is reported with an office or other outpatient code.

New and Established Patients

Solely for the purposes of distinguishing between new and established patients, **professional services** are those face-to-face services rendered by physicians and other qualified health care professionals who may report evaluation and management services. A new patient is one who has not received any professional services from the physician or other qualified health care professional or another physician or other qualified health care professional of the **exact** same specialty **and subspecialty** who belongs to the same group practice, within the past three years.

An established patient is one who has received professional services from the physician or other qualified health care professional or another physician or other qualified health care professional of the **exact** same specialty **and subspecialty** who belongs to the same group practice, within the past three years. See Decision Tree for New vs Established Patients.

In the instance where a physician or other qualified health care professional is on call for or covering for another physician or other qualified health care professional, the patient's encounter will be classified as it would have been by the physician or other qualified health care professional who is not available. When advanced practice nurses and physician assistants are working with physicians, they are considered as working in the **exact** same specialty **and subspecialty** as the physician.

No distinction is made between new and established patients in the emergency department. E/M services in the emergency department category may be reported for any new or established patient who presents for treatment in the emergency department.

The Decision Tree for New vs Established Patients is provided to aid in determining whether to report the E/M service provided as a new or an established patient encounter.

Coding Tip

Instructions for Use of the CPT Codebook

When advanced practice nurses and physician assistants are working with physicians, they are considered as working in the exact same specialty and subspecialty as the physician. A "physician or other qualified health care professional" is an individual who is qualified by education, training, licensure/regulation (when applicable), and facility privileging (when applicable) who performs a professional service within his or her scope of practice and independently reports that professional service. These professionals are distinct from "clinical staff." A clinical staff member is a person who works under the supervision of a physician or other qualified health care professional, and who is allowed by law, regulation and facility policy to perform or assist in the performance of a specific professional service but does not individually report that professional service. Other policies may also affect who may report specific services.

CPT Coding Guidelines, Introduction, Instructions for Use of the CPT Codebook

Initial and Subsequent Services

Some categories apply to both new and established patients (eg, hospital inpatient or observation care). These categories differentiate services by whether the service is the initial service or a subsequent service. For the purpose of distinguishing between initial or subsequent visits, professional services are those face-to-face services rendered by physicians and other qualified health care professionals who may report evaluation and management services. An initial service is when the patient has not received any professional services from the physician or other qualified health care professional or another physician or other qualified health care

professional of the exact same specialty and subspecialty who belongs to the same group practice, during the inpatient, observation, or nursing facility admission and stay.

A subsequent service is when the patient has received professional service(s) from the physician or other qualified health care professional or another physician or other qualified health care professional of the exact same specialty and subspecialty who belongs to the same group practice, during the admission and stay.

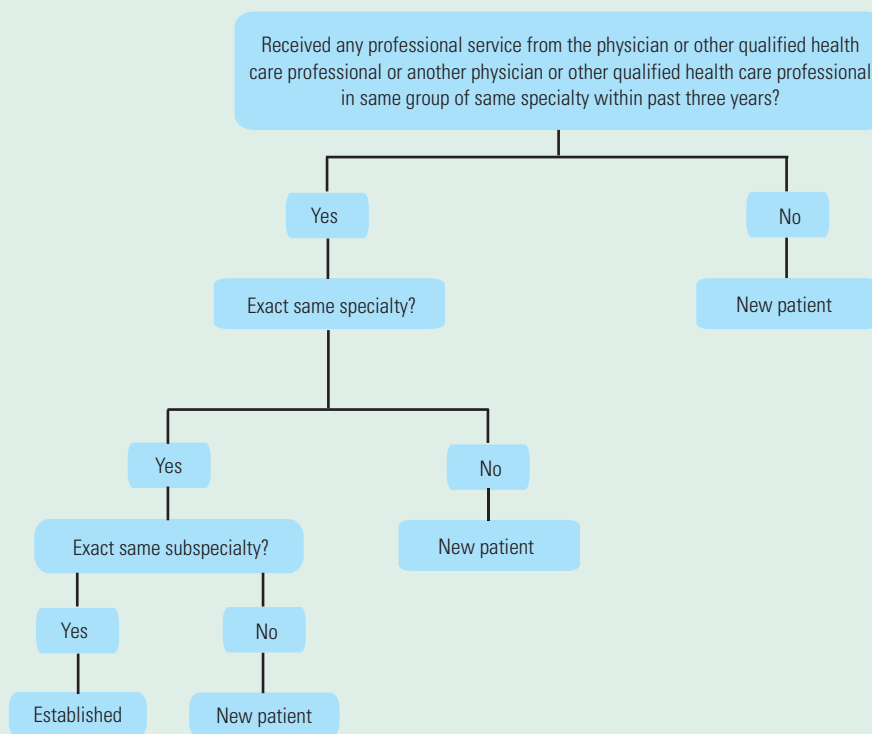
In the instance when a physician or other qualified health care professional is on call for or covering for another physician or other qualified health care professional, the patient's encounter will be classified as it would have been by the physician or other qualified health care professional who is not available. When advanced practice nurses and physician assistants are working with physicians, they are considered as working in the exact same specialty and subspecialty as the physician.

For reporting hospital inpatient or observation care services, a stay that includes a transition from observation to inpatient is a single stay. For reporting nursing facility services, a stay that includes transition(s) between skilled nursing facility and nursing facility level of care is the same stay.

Split or Shared Visits

Physician(s) and other qualified health care professional(s) (QHP[s]) may act as a team in providing care for the patient, working together during a single E/M service. The split or shared visits guidelines are applied to determine which professional may report the service. If the physician or other QHP performs a substantive portion of the encounter, the physician or other QHP may report the service. If code selection is based on total time on the date of the encounter, the service is reported by the professional who spent the majority of the face-to-face or non-face-to-face time performing the service. For the purpose of reporting E/M services within the context of team-based care, performance of a substantive part of the MDM requires that the physician(s) or other QHP(s) made or approved the management plan for the **number and complexity of problems addressed at the encounter** and takes responsibility for that plan with its inherent **risk of complications and/or morbidity or mortality of patient management**. By doing so, a physician or other QHP has performed two of the three elements used in the selection of the code level based on MDM. If **the amount and/or complexity of data to be reviewed and analyzed** is used by the physician or other QHP to determine the reported code level, assessing an independent historian's narrative and the ordering or review of tests or documents do not have to be personally performed by the physician or other QHP, because the relevant items would be considered in formulating the management plan. Independent interpretation of tests

Decision Tree for New vs Established Patients



and discussion of management plan or test interpretation must be personally performed by the physician or other QHP if these are used to determine the reported code level by the physician or other QHP.

Multiple Evaluation and Management Services on the Same Date

The following guidelines apply to services that a patient may receive for hospital inpatient care, observation care, or nursing facility care. For instructions regarding transitions to these settings from the office or outpatient, home or residence, or emergency department setting, see guidelines for **Hospital Inpatient and Observation Care Services** or **Nursing Facility Services**.

A patient may receive E/M services in more than one setting on a calendar date. A patient may also have more than one visit in the same setting on a calendar date. The guidelines for multiple E/M services on the same date address circumstances in which the patient has received multiple visits or services from the same physician or other QHP or another physician or other QHP of the exact same specialty and subspecialty who belongs to the same group practice.

Per day: The hospital inpatient and observation care services and the nursing facility services are “per day” services. When multiple visits occur over the course of a single calendar date in the same setting, a single service is reported. When using MDM for code level selection, use the aggregated MDM over the course of the calendar date. When using time for code level selection, sum the time over the course of the day using the guidelines for reporting time.

Multiple encounters in different settings or facilities: A patient may be seen and treated in different facilities (eg, a hospital-to-hospital transfer). When more than one primary E/M service is reported and time is used to select the code level for either service, only the time spent providing that individual service may be allocated to the code level selected for reporting that service. No time may be counted twice when reporting more than one E/M service. Prolonged services are also based on the same allocation and their relationship to the primary service. The designation of the facility may be defined by licensure or regulation. Transfer from a hospital bed to a nursing facility bed in a hospital with nursing facility beds is considered as two services in two facilities because there is a discharge from one type of designation to another. An intra-facility transfer for a different level of care (eg, from a routine unit to a critical care unit) does not constitute a new stay, nor does it constitute a transfer to a different facility.

Emergency department (ED) and services in other settings (same or different facilities): Time spent in an ED by a physician or other QHP who provides subsequent E/M services may be included in calculating total time on the date of the encounter when ED services are not reported and another E/M service is reported (eg, hospital inpatient and observation care services).

Discharge services and services in other facilities: Each service may be reported separately as long as any time spent on the discharge service is not counted towards the total time of a subsequent service in which code level selection for the subsequent service is based on time. This includes any hospital inpatient or observation care services (including admission and discharge services) time (99234, 99235, 99236) because these services may be selected based on MDM or time. When these services are reported with another E/M service on the same calendar date, time related to the hospital inpatient or observation care service (including admission and discharge services) may not be used for code selection of the subsequent service.

Discharge services and services in the same facility: If the patient is discharged and readmitted to the same facility on the same calendar date, report a subsequent care service instead of a discharge or initial service. For the purpose of E/M reporting, this is a single stay.

Discharge services and services in a different facility: If the patient is admitted to another facility, for the purpose of E/M reporting this is considered a different stay. Discharge and initial services may be reported as long as time spent on the discharge service is not counted towards the total time of the subsequent service reported when code level selection is based on time.

Critical care services (including neonatal intensive care services and pediatric and neonatal critical care): Reporting guidelines for intensive and critical care services that are performed on the same calendar date as another E/M service are described in the service specific section guidelines.

Transitions between office or other outpatient, home or residence, or emergency department and hospital inpatient or observation or nursing facility: See the guidelines for **Hospital Inpatient and Observation Care Services** or **Nursing Facility Services**. If the patient is seen in two settings and only one service is reported, the total time on the date of the encounter or the aggregated MDM is used for determining the level of the single reported service. If prolonged services are reported, use the prolonged services code that is appropriate for the primary service reported, regardless of where the patient was located when the prolonged services time threshold was met. The choice of the primary service is at the discretion of the reporting physician or other QHP.

Services Reported Separately

Any specifically identifiable procedure or service (ie, identified with a specific CPT code) performed on the date of E/M services may be reported separately.

The ordering and actual performance and/or interpretation of diagnostic tests/studies during a patient encounter are not included in determining the levels of E/M services when the professional interpretation of those tests/studies is reported separately by the physician or other qualified health care professional reporting the E/M service. Tests that do not require separate interpretation (eg, tests that are results only) and are analyzed as part of MDM do not count as an independent interpretation, but may be counted as ordered or reviewed for selecting an MDM level. The performance of diagnostic tests/studies for which specific CPT codes are available may be reported separately, in addition to the appropriate E/M code. The interpretation of the results of diagnostic tests/studies (ie, professional component) with preparation of a separate distinctly identifiable signed written report may also be reported separately, using the appropriate CPT code and, if required, with modifier 26 appended.

The physician or other qualified health care professional may need to indicate that on the day a procedure or service identified by a CPT code was performed, the patient's condition required a significant separately identifiable E/M service. The E/M service may be caused or prompted by the symptoms or condition for which the procedure and/or service was provided. This circumstance may be reported by adding modifier 25 to the appropriate level of E/M service. As such, different diagnoses are not required for reporting of the procedure and the E/M services on the same date.

History and/or Examination

E/M codes that have levels of services include a medically appropriate history and/or physical examination, when performed. The nature and extent of the history and/or physical examination are determined by the treating physician or other qualified health care professional reporting the service. The care team may collect information, and the patient or caregiver may supply information directly (eg, by electronic health record [EHR] portal or questionnaire) that is reviewed by the reporting physician or other qualified health care professional. The extent of history and physical examination is not an element in selection of the level of these E/M service codes.

Levels of E/M Services

Select the appropriate level of E/M services based on the following:

1. The level of the MDM as defined for each service, **or**
2. The total time for E/M services performed on the date of the encounter.

Within each category or subcategory of E/M service based on MDM or time, there are three to five levels of E/M services available for reporting purposes. Levels of E/M services are **not** interchangeable among the different categories or subcategories of service. For example, the first level of E/M services in the subcategory of office visit, new patient, does not have the same definition as the first level of E/M services in the subcategory of office visit, established patient. Each level of E/M services may be used by all physicians or other qualified health care professionals.

Guidelines for Selecting Level of Service Based on Medical Decision Making

Four types of MDM are recognized: straightforward, low, moderate, and high. The concept of the level of MDM does not apply to 99211, 99281.

MDM includes establishing diagnoses, assessing the status of a condition, and/or selecting a management option. MDM is defined by three elements. The elements are:

- **The number and complexity of problem(s) that are addressed during the encounter.**
- **The amount and/or complexity of data to be reviewed and analyzed.** These data include medical records, tests, and/or other information that must be obtained, ordered, reviewed, and analyzed for the encounter. This includes information obtained from multiple sources or interprofessional communications that are not reported separately and interpretation of tests that are not reported separately. Ordering a test is included in the category of test result(s) and the review of the test result is part of the encounter and not a subsequent encounter. Ordering a test may include those considered but not selected after shared decision making. For example, a patient may request diagnostic imaging that is not necessary for their condition and discussion of the lack of benefit may be required. Alternatively, a test may normally be performed, but due to the risk for a specific patient it is not ordered. These considerations must be documented. Data are divided into three categories:
 - Tests, documents, orders, or independent historian(s). (Each unique test, order, or document is counted to meet a threshold number.)

- Independent interpretation of tests (not separately reported).
- Discussion of management or test interpretation with external physician or other qualified health care professional or appropriate source (not separately reported).

- **The risk of complications and/or morbidity or mortality of patient management.** This includes decisions made at the encounter associated with diagnostic procedure(s) and treatment(s). This includes the possible management options selected and those considered but not selected after shared decision making with the patient and/or family. For example, a decision about hospitalization includes consideration of alternative levels of care. Examples may include a psychiatric patient with a sufficient degree of support in the outpatient setting or the decision to not hospitalize a patient with advanced dementia with an acute condition that would generally warrant inpatient care, but for whom the goal is palliative treatment.

Shared decision making involves eliciting patient and/or family preferences, patient and/or family education, and explaining risks and benefits of management options.

MDM may be impacted by role and management responsibility.

When the physician or other qualified health care professional is reporting a separate CPT code that includes interpretation and/or report, the interpretation and/or report is not counted toward the MDM when selecting a level of E/M services. When the physician or other qualified health care professional is reporting a separate service for discussion of management with a physician or another qualified health care professional, the discussion is not counted toward the MDM when selecting a level of E/M services.

The Levels of Medical Decision Making (MDM) table (Table 1) is a guide to assist in selecting the level of MDM for reporting an E/M services code. The table includes the four levels of MDM (ie, straightforward, low, moderate, high) and the three elements of MDM (ie, number and complexity of problems addressed at the encounter, amount and/or complexity of data reviewed and analyzed, and risk of complications and/or morbidity or mortality of patient management). To qualify for a particular level of MDM, two of the three elements for that level of MDM must be met or exceeded.

Examples in the table may be more or less applicable to specific settings of care. For example, the decision to hospitalize applies to the outpatient or nursing facility encounters, whereas the decision to escalate hospital level of care (eg, transfer to ICU) applies to the hospitalized or observation care patient. See also the introductory guidelines of each code family section.

The elements listed in Table 1, Levels of Medical Decision Making, are defined in the guidelines for number and complexity of problems addressed at the encounter, amount and/or complexity of data to be reviewed and analyzed, and risk of complications and/or morbidity or mortality of patient management.

Number and Complexity of Problems Addressed at the Encounter

One element used in selecting the level of service is the number and complexity of the problems that are addressed at the encounter. Multiple new or established conditions may be addressed at the same time and may affect MDM. Symptoms may cluster around a specific diagnosis and each symptom is not necessarily a unique condition. Comorbidities and underlying diseases, in and of themselves, are not considered in selecting a level of E/M services **unless** they are addressed, and their presence increases the amount and/or complexity of data to be reviewed and analyzed or the risk of complications and/or morbidity or mortality of patient management. The final diagnosis for a condition does not, in and of itself, determine the complexity or risk, as extensive evaluation may be required to reach the conclusion that the signs or symptoms do not represent a highly morbid condition. Therefore, presenting symptoms that are likely to represent a highly morbid condition may “drive”

MDM even when the ultimate diagnosis is not highly morbid. The evaluation and/or treatment should be consistent with the likely nature of the condition. Multiple problems of a lower severity may, in the aggregate, create higher risk due to interaction.

The term “risk” as used in the definition of this element relates to risk from the condition. While condition risk and management risk may often correlate, the risk from the condition is distinct from the risk of the management.

Problem: A problem is a disease, condition, illness, injury, symptom, sign, finding, complaint, or other matter addressed at the encounter, with or without a diagnosis being established at the time of the encounter.

Problem addressed: A problem is addressed or managed when it is evaluated or treated at the encounter by the physician or other qualified health care professional reporting the service. This includes consideration of further testing or treatment that may not be elected by virtue of risk/benefit analysis or patient/parent/guardian/surrogate choice. Notation in the patient’s medical record that another professional is managing the problem without additional assessment or care coordination documented does not qualify as being addressed or managed by the physician or other qualified health care professional reporting the service. Referral without evaluation (by history, examination, or diagnostic

(continued on page 11)

Table 1: Levels of Medical Decision Making (MDM)

Elements of Medical Decision Making			
Level of MDM (Based on 2 out of 3 Elements of MDM)	Number and Complexity of Problems Addressed at the Encounter	Amount and/or Complexity of Data to Be Reviewed and Analyzed <i>*Each unique test, order, or document contributes to the combination of 2 or combination of 3 in Category 1 below.</i>	Risk of Complications and/or Morbidity or Mortality of Patient Management
Straightforward	Minimal ■ 1 self-limited or minor problem	Minimal or none	Minimal risk of morbidity from additional diagnostic testing or treatment
Low	Low ■ 2 or more self-limited or minor problems; or ■ 1 stable, chronic illness; or ■ 1 acute, uncomplicated illness or injury; or ■ 1 stable, acute illness; or ■ 1 acute, uncomplicated illness or injury requiring hospital inpatient or observation level of care	Limited (Must meet the requirements of at least 1 out of 2 categories) Category 1: Tests and documents ■ Any combination of 2 from the following: • Review of prior external note(s) from each unique source*; • Review of the result(s) of each unique test*; • Ordering of each unique test* or Category 2: Assessment requiring an independent historian(s) (For the categories of independent interpretation of tests and discussion of management or test interpretation, see moderate or high)	Low risk of morbidity from additional diagnostic testing or treatment

(continued)

Elements of Medical Decision Making			
Level of MDM (Based on 2 out of 3 Elements of MDM)	Number and Complexity of Problems Addressed at the Encounter	Amount and/or Complexity of Data to Be Reviewed and Analyzed <i>*Each unique test, order, or document contributes to the combination of 2 or combination of 3 in Category 1 below.</i>	Risk of Complications and/or Morbidity or Mortality of Patient Management
Moderate	Moderate <ul style="list-style-type: none"> ■ 1 or more chronic illnesses with exacerbation, progression, or side effects of treatment; or <ul style="list-style-type: none"> ■ 2 or more stable, chronic illnesses; or <ul style="list-style-type: none"> ■ 1 undiagnosed new problem with uncertain prognosis; or <ul style="list-style-type: none"> ■ 1 acute illness with systemic symptoms; or <ul style="list-style-type: none"> ■ 1 acute, complicated injury 	Moderate <i>(Must meet the requirements of at least 1 out of 3 categories)</i> Category 1: Tests, documents, or independent historian(s) <ul style="list-style-type: none"> ■ Any combination of 3 from the following: <ul style="list-style-type: none"> • Review of prior external note(s) from each unique source*; • Review of the result(s) of each unique test*; • Ordering of each unique test*; • Assessment requiring an independent historian(s) or Category 2: Independent interpretation of tests <ul style="list-style-type: none"> ■ Independent interpretation of a test performed by another physician/other qualified health care professional (not separately reported); or Category 3: Discussion of management or test interpretation <ul style="list-style-type: none"> ■ Discussion of management or test interpretation with external physician/other qualified health care professional/appropriate source (not separately reported) 	Moderate risk of morbidity from additional diagnostic testing or treatment <i>Examples only:</i> <ul style="list-style-type: none"> ■ Prescription drug management ■ Decision regarding minor surgery with identified patient or procedure risk factors ■ Decision regarding elective major surgery without identified patient or procedure risk factors ■ Diagnosis or treatment significantly limited by social determinants of health
High	High <ul style="list-style-type: none"> ■ 1 or more chronic illnesses with severe exacerbation, progression, or side effects of treatment; or <ul style="list-style-type: none"> ■ 1 acute or chronic illness or injury that poses a threat to life or bodily function 	Extensive <i>(Must meet the requirements of at least 2 out of 3 categories)</i> Category 1: Tests, documents, or independent historian(s) <ul style="list-style-type: none"> ■ Any combination of 3 from the following: <ul style="list-style-type: none"> • Review of prior external note(s) from each unique source*; • Review of the result(s) of each unique test*; • Ordering of each unique test*; • Assessment requiring an independent historian(s) or Category 2: Independent interpretation of tests <ul style="list-style-type: none"> ■ Independent interpretation of a test performed by another physician/other qualified health care professional (not separately reported); or Category 3: Discussion of management or test interpretation <ul style="list-style-type: none"> ■ Discussion of management or test interpretation with external physician/other qualified health care professional/appropriate source (not separately reported) 	High risk of morbidity from additional diagnostic testing or treatment <i>Examples only:</i> <ul style="list-style-type: none"> ■ Drug therapy requiring intensive monitoring for toxicity ■ Decision regarding elective major surgery with identified patient or procedure risk factors ■ Decision regarding emergency major surgery ■ Decision regarding hospitalization or escalation of hospital-level care ■ Decision not to resuscitate or to de-escalate care because of poor prognosis ■ Decision regarding parenteral controlled substances

(continued from page 9)

study[ies]) or consideration of treatment does not qualify as being addressed or managed by the physician or other qualified health care professional reporting the service. For hospital inpatient and observation care services, the problem addressed is the problem status on the date of the encounter, which may be significantly different than on admission. It is the problem being managed or co-managed by the reporting physician or other qualified health care professional and may not be the cause of admission or continued stay.

Minimal problem: A problem that may not require the presence of the physician or other qualified health care professional, but the service is provided under the physician's or other qualified health care professional's supervision (see 99211, 99281).

Self-limited or minor problem: A problem that runs a definite and prescribed course, is transient in nature, and is not likely to permanently alter health status.

Stable, chronic illness: A problem with an expected duration of at least one year or until the death of the patient. For the purpose of defining chronicity, conditions are treated as chronic whether or not stage or severity changes (eg, uncontrolled diabetes and controlled diabetes are a single chronic condition). "Stable" for the purposes of categorizing MDM is defined by the specific treatment goals for an individual patient. A patient who is not at his or her treatment goal is not stable, even if the condition has not changed and there is no short-term threat to life or function. For example, a patient with persistently poorly controlled blood pressure for whom better control is a goal is not stable, even if the pressures are not changing and the patient is asymptomatic. The risk of morbidity **without** treatment is significant.

Acute, uncomplicated illness or injury: A recent or new short-term problem with low risk of morbidity for which treatment is considered. There is little to no risk of mortality with treatment, and full recovery without functional impairment is expected. A problem that is normally self-limited or minor but is not resolving consistent with a definite and prescribed course is an acute, uncomplicated illness.

Acute, uncomplicated illness or injury requiring hospital inpatient or observation level care: A recent or new short-term problem with low risk of morbidity for which treatment is required. There is little to no risk of mortality with treatment, and full recovery without functional impairment is expected. The treatment required is delivered in a hospital inpatient or observation level setting.

Stable, acute illness: A problem that is new or recent for which treatment has been initiated. The patient is improved and, while resolution may not be complete, is stable with respect to this condition.

Chronic illness with exacerbation, progression, or side effects of treatment: A chronic illness that is acutely worsening, poorly controlled, or progressing with an intent to control progression and requiring additional supportive care or requiring attention to treatment for side effects.

Undiagnosed new problem with uncertain prognosis: A problem in the differential diagnosis that represents a condition likely to result in a high risk of morbidity without treatment.

Acute illness with systemic symptoms: An illness that causes systemic symptoms and has a high risk of morbidity without treatment. For systemic general symptoms, such as fever, body aches, or fatigue in a minor illness that may be treated to alleviate symptoms, see the definitions for **self-limited or minor problem** or **acute, uncomplicated illness or injury**. Systemic symptoms may not be general but may be single system.

Acute, complicated injury: An injury which requires treatment that includes evaluation of body systems that are not directly part of the injured organ, the injury is extensive, or the treatment options are multiple and/or associated with risk of morbidity.

Chronic illness with severe exacerbation, progression, or side effects of treatment: The severe exacerbation or progression of a chronic illness or severe side effects of treatment that have significant risk of morbidity and may require escalation in level of care.

Acute or chronic illness or injury that poses a threat to life or bodily function: An acute illness with systemic symptoms, an acute complicated injury, or a chronic illness or injury with exacerbation and/or progression or side effects of treatment, that poses a threat to life or bodily function in the near term without treatment. Some symptoms may represent a condition that is significantly probable and poses a potential threat to life or bodily function. These may be included in this category when the evaluation and treatment are consistent with this degree of potential severity.

Amount and/or Complexity of Data to Be Reviewed and Analyzed

One element used in selecting the level of services is the amount and/or complexity of data to be reviewed or analyzed at an encounter.

Analyzed: The process of using the data as part of the MDM. The data element itself may not be subject to analysis (eg, glucose), but it is instead included in the thought processes for diagnosis, evaluation, or treatment. Tests ordered are presumed to be analyzed when the results are reported. Therefore, when they are ordered during an encounter, they are counted in that encounter. Tests that are ordered outside of an encounter may be counted in the encounter in which they are analyzed. In the case of a recurring order, each new result may be counted in the encounter in which it is analyzed. For

example, an encounter that includes an order for monthly prothrombin times would count for one prothrombin time ordered and reviewed. Additional future results, if analyzed in a subsequent encounter, may be counted as a single test in that subsequent encounter. Any service for which the professional component is separately reported by the physician or other qualified health care professional reporting the E/M services is not counted as a data element ordered, reviewed, analyzed, or independently interpreted for the purposes of determining the level of MDM.

Test: Tests are imaging, laboratory, psychometric, or physiologic data. A clinical laboratory panel (eg, basic metabolic panel [80047]) is a single test. The differentiation between single or multiple tests is defined in accordance with the CPT code set. For the purpose of data reviewed and analyzed, pulse oximetry is not a test.

Unique: A unique test is defined by the CPT code set. When multiple results of the same unique test (eg, serial blood glucose values) are compared during an E/M service, count it as one unique test. Tests that have overlapping elements are not unique, even if they are identified with distinct CPT codes. For example, a CBC with differential would incorporate the set of hemoglobin, CBC without differential, and platelet count. A unique source is defined as a physician or other qualified health care professional in a distinct group or different specialty or subspecialty, or a unique entity. Review of all materials from any unique source counts as one element toward MDM.

Combination of data elements: A combination of different data elements, for example, a combination of notes reviewed, tests ordered, tests reviewed, or independent historian, allows these elements to be summed. It does not require each item type or category to be represented. A unique test ordered, plus a note reviewed and an independent historian would be a combination of three elements.

External: External records, communications and/or test results are from an external physician, other qualified health care professional, facility, or health care organization.

External physician or other qualified health care professional: An external physician or other qualified health care professional who is not in the same group practice or is of a different specialty or subspecialty. This includes licensed professionals who are practicing independently. The individual may also be a facility or organizational provider such as from a hospital, nursing facility, or home health care agency.

Discussion: Discussion requires an interactive exchange. The exchange must be direct and not through intermediaries (eg, clinical staff or trainees). Sending chart notes or written exchanges that are within progress notes does not qualify as an interactive exchange. The discussion does not need to be on the date of the

encounter, but it is counted only once and only when it is used in the decision making of the encounter. It may be asynchronous (ie, does not need to be in person), but it must be initiated and completed within a short time period (eg, within a day or two).

Independent historian(s): An individual (eg, parent, guardian, surrogate, spouse, witness) who provides a history in addition to a history provided by the patient who is unable to provide a complete or reliable history (eg, due to developmental stage, dementia, or psychosis) or because a confirmatory history is judged to be necessary. In the case where there may be conflict or poor communication between multiple historians and more than one historian is needed, the independent historian requirement is met. It does not include translation services. The independent history does not need to be obtained in person but does need to be obtained directly from the historian providing the independent information.

Independent interpretation: The interpretation of a test for which there is a CPT code, and an interpretation or report is customary. This does not apply when the physician or other qualified health care professional who reports the E/M service is reporting or has previously reported the test. A form of interpretation should be documented but need not conform to the usual standards of a complete report for the test. A test that is ordered and independently interpreted may count both as a test ordered and interpreted.

Appropriate source: For the purpose of the **discussion of management** data element (see Table 1, Levels of Medical Decision Making), an appropriate source includes professionals who are not health care professionals but may be involved in the management of the patient (eg, lawyer, parole officer, case manager, teacher). It does not include discussion with family or informal caregivers. For the purpose of **documents reviewed**, documents from an appropriate source may be counted.

Risk of Complications and/or Morbidity or Mortality of Patient Management

One element used in selecting the level of service is the risk of complications and/or morbidity or mortality of patient management at an encounter. This is distinct from the risk of the condition itself.

Risk: The probability and/or consequences of an event. The assessment of the level of risk is affected by the nature of the event under consideration. For example, a low probability of death may be high risk, whereas a high chance of a minor, self-limited adverse effect of treatment may be low risk. Definitions of risk are based upon the usual behavior and thought processes of a physician or other qualified health care professional in the same specialty. Trained clinicians apply common language usage meanings to terms such as *high, medium, low*, or

minimal risk and do not require quantification for these definitions (though quantification may be provided when evidence-based medicine has established probabilities). For the purpose of MDM, level of risk is based upon consequences of the problem(s) addressed at the encounter when appropriately treated. Risk also includes MDM related to the need to initiate or forego further testing, treatment, and/or hospitalization. The risk of patient management criteria applies to the patient management decisions made by the reporting physician or other qualified health care professional as part of the reported encounter.

Morbidity: A state of illness or functional impairment that is expected to be of substantial duration during which function is limited, quality of life is impaired, or there is organ damage that may not be transient despite treatment.

Social determinants of health: Economic and social conditions that influence the health of people and communities. Examples may include food or housing insecurity.

Surgery (minor or major, elective, emergency, procedure or patient risk):

Surgery—Minor or Major: The classification of surgery into minor or major is based on the common meaning of such terms when used by trained clinicians, similar to the use of the term “risk.” These terms are not defined by a surgical package classification.

Surgery—Elective or Emergency: Elective procedures and emergent or urgent procedures describe the timing of a procedure when the timing is related to the patient’s condition. An elective procedure is typically planned in advance (eg, scheduled for weeks later), while an emergent procedure is typically performed immediately or with minimal delay to allow for patient stabilization. Both elective and emergent procedures may be minor or major procedures.

Surgery—Risk Factors, Patient or Procedure: Risk factors are those that are relevant to the patient and procedure. Evidence-based risk calculators may be used, but are not required, in assessing patient and procedure risk.

Drug therapy requiring intensive monitoring for toxicity: A drug that requires intensive monitoring is a therapeutic agent that has the potential to cause serious morbidity or death. The monitoring is performed for assessment of these adverse effects and not primarily for assessment of therapeutic efficacy. The monitoring should be that which is generally accepted practice for the agent but may be patient-specific in some cases. Intensive monitoring may be long-term or short-term. Long-term intensive monitoring is not performed less than quarterly. The monitoring may be performed with a laboratory test, a physiologic test, or imaging. Monitoring by history or examination does not qualify. The monitoring affects the level of MDM in an encounter in which it is considered

in the management of the patient. An example may be monitoring for cytopenia in the use of an antineoplastic agent between dose cycles. Examples of monitoring that do not qualify include monitoring glucose levels during insulin therapy, as the primary reason is the therapeutic effect (unless severe hypoglycemia is a current, significant concern); or annual electrolytes and renal function for a patient on a diuretic, as the frequency does not meet the threshold.

Parenteral controlled substances: The level of risk is based on the usual behavior and thought processes of a physician or other qualified health care professional in the same specialty and subspecialty and not simply based on the presence of an order for parenteral controlled substances.

Guidelines for Selecting Level of Service Based on Time

Certain categories of time-based E/M codes that do not have levels of services based on MDM (eg, Critical Care Services) in the E/M section use time differently. It is important to review the instructions for each category.

Time is **not** a descriptive component for the emergency department levels of E/M services because emergency department services are typically provided on a variable intensity basis, often involving multiple encounters with several patients over an extended period of time.

When time is used for reporting E/M services codes, the time defined in the service descriptors is used for selecting the appropriate level of services. The E/M services for which these guidelines apply require a face-to-face encounter with the physician or other qualified health care professional and the patient and/or family/caregiver. For office or other outpatient services, if the physician’s or other qualified health care professional’s time is spent in the supervision of clinical staff who perform the face-to-face services of the encounter, use 99211.

For coding purposes, time for these services is the total time on the date of the encounter. It includes both the face-to-face time with the patient and/or family/caregiver and non-face-to-face time personally spent by the physician and/or other qualified health care professional(s) on the day of the encounter (includes time in activities that require the physician or other qualified health care professional and does not include time in activities normally performed by clinical staff). It includes time regardless of the location of the physician or other qualified health care professional (eg, whether on or off the inpatient unit or in or out of the outpatient office). It does not include any time spent in the performance of other separately reported service(s).

Each service that may be reported using time for code level selection has a required time threshold. The concept of attaining a mid-point between levels does not apply. A full 15 minutes is required to report any unit of prolonged services codes 99417, 99418.

Physician(s) and other qualified health care professional(s) may each provide a portion of the face-to-face and non-face-to-face work related to the service. When time is being used to select the appropriate level of services for which time-based reporting is allowed, the time personally spent by the physician(s) and other qualified health care professional(s) assessing and managing the patient and/or counseling, educating, communicating results to the patient/family/caregiver on the date of the encounter is summed to define total time. Only distinct time should be summed (ie, when two or more individuals jointly meet with or discuss the patient, only the time of one individual should be counted).

When prolonged time occurs, the appropriate prolonged services code may be reported. The total time on the date of the encounter spent caring for the patient should be documented in the medical record when it is used as the basis for code selection.

Physician or other qualified health care professional time includes the following activities, when performed:

- preparing to see the patient (eg, review of tests)
- obtaining and/or reviewing separately obtained history
- performing a medically appropriate examination and/or evaluation
- counseling and educating the patient/family/caregiver
- ordering medications, tests, or procedures
- referring and communicating with other health care professionals (when not separately reported)
- documenting clinical information in the electronic or other health record
- independently interpreting results (not separately reported) and communicating results to the patient/family/caregiver
- care coordination (not separately reported)

Do not count time spent on the following:

- the performance of other services that are reported separately
- travel
- teaching that is general and not limited to discussion that is required for the management of a specific patient

For split or shared visits, see the split or shared visits guidelines.

Unlisted Service

An E/M service may be provided that is not listed in this section of the CPT codebook. When reporting such a service, the appropriate unlisted code may be used to indicate the service, identifying it by “Special Report,” as discussed in the following paragraph. The “Unlisted Services” and accompanying codes for the E/M section are as follows:

99429 **Unlisted preventive** medicine service

99499 **Unlisted evaluation and management** service

Special Report

An unlisted service or one that is unusual, variable, or new may require a special report demonstrating the medical appropriateness of the service. Pertinent information should include an adequate definition or description of the nature, extent, and need for the procedure and the time, effort, and equipment necessary to provide the service. Additional items that may be included are complexity of symptoms, final diagnosis, pertinent physical findings, diagnostic and therapeutic procedures, concurrent problems, and follow-up care.